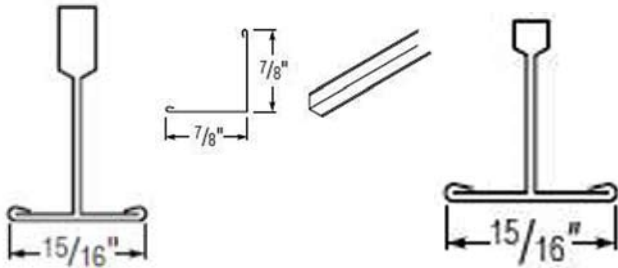




## CEILING SUPPORT SYSTEMS SIMPLICITEE®



Provides contemporary look in professional or do-it-yourself applications. Ceiling grid: sold in full box quantities. Hanger wire: sold by the bundle.

**Main Tees.** Intermediate duty for use on remodeling and light commercial projects. Snap together design.

**Cross Tees.** Provide flat, professional appearance. Features high tensile strength connection clips.

### Ceiling Grid

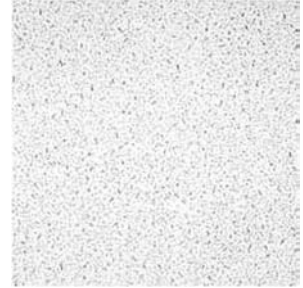
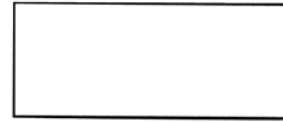
Item #	Size In. x Ft.	Description	Package Qty
41600	1-1/2 x 12	Main Tee-SDx24	20 Pcs/box
41602	1 x 2	Cross Tee-SDx216	60 Pcs/box
41603	1-1/2 x 4	Cross Tee-SDx424	60 Pcs/box
41606	7/8 x 12	Wall Mold-SM7	40 Pcs/box

### Accessories

Item #	Size Ft.	Description	Package Qty
41803	6	Hanger wire	100 Pcs/ bundle

All USG Grid in Stock is Fire Rated.

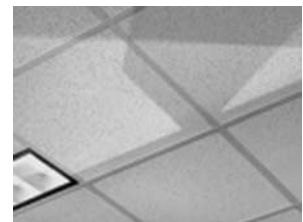
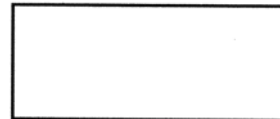
## CEILING PANELS Square Edge – Advantage Series



Mineral fiber construction. 25/10 flame spread/smoke developed. Measures 2 ft. x 4 ft. x 9/16" thick. Class A. 64 sq. ft./box.

Item #	Pattern	Description
41350	Stonehurst	Plain white
41353	Plateau	Fissured, non-directional

## ACOUSTICAL CEILING PANELS



Provides sound control in commercial environments. .55 NRC. 25/10 flame spread/smoke developed. 5/8" thick. 64 sq. ft./box.

Item #	Type	Edge	Size Ft.
41000	Fifth Avenue	Square	2 x 2
41001	Fifth Avenue	Square	2 x 4
41003	Radar	Square	2 x 4
41007	Radar	Tapered	2 x 2
41354	Alpine	Tapered	2 x 2

Visit us on the web at [www.unitedplywoods.com](http://www.unitedplywoods.com)

Birmingham, AL  
1640 Mims Ave. SW  
Ph: 205-925-7601  
Fax: 205-925-1315  
800-272-6486

Decatur, AL  
723 Old Trinity Road  
Ph: 256-355-3161  
Fax: 256-355-0073  
800-321-6886



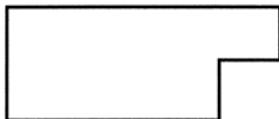
Mobile, AL  
5445 Business Parkway  
Ph: 251-378-0188  
Fax: 251-378-0190  
877-531-7468

Montgomery, AL  
581 Trade Center Street  
Ph: 334-265-6721  
Fax: 334-265-6725  
800-392-8024



**ACOUSTICAL CEILING PANELS**

Elite Series



Provides sound control in commercial environments. 25/15 flame spread/smoke developed. Measures 2' x 2' x 3/4" thick. 32 sq. ft./box. ClimaPlus™. Features high total sound control and light reflectance. Sag resistant. Ideal for high moisture areas.

Item #	Pattern	NRC
41408	Cheyenne	0.65
41410	Sandrift ClimaPlus	0.7

**CEILING TILES**

Staple Up – Advantage Series



Wood fiber construction. Provides clean look. For use in applications where fire resistance, acoustical performance and accessibility are not required. Features tongue-and-groove edging. Measures 12" x 12" x 1/2". Class C. 32sq. ft./box.

Item #	Pattern
41405	Tivoli
41400	Custom White

**To Calculate Ceiling Jobs:**

Sq. Ft. ÷ 4 ÷ 2 = 4' Cross Tee  
 Sq. Ft. ÷ 4 ÷ 12 = 12' Main Tee

On a 2 x 4 ceiling:  
 panels will equal 4' cross tees.

On a 2 x 2 ceiling:  
 2' tees = 4' tees;  
 2 x 2 Panel = double 2' cross tees.

12' Wall mold = perimeter of room ÷ 12' = No. pcs.

Visit us on the web at [www.unitedplywoods.com](http://www.unitedplywoods.com)

Birmingham, AL  
 1640 Mims Ave. SW  
 Ph: 205-925-7601  
 Fax: 205-925-1315  
 800-272-6486

Decatur, AL  
 723 Old Trinity Road  
 Ph: 256-355-3161  
 Fax: 256-355-0073  
 800-321-6886



Mobile, AL  
 5445 Business Parkway  
 Ph: 251-378-0188  
 Fax: 251-378-0190  
 877-531-7468

Montgomery, AL  
 581 Trade Center Street  
 Ph: 334-265-6721  
 Fax: 334-265-6725  
 800-392-8024