

PVC EDGEBOARDING



.018" x 15/16". Automatic (no glue) and pre-glued material. Pre-glued material can be applied with a heat gun and/or hot air edgebander (no-iron). Sold individually.

| Item # | Color | Length | Type |
|----------------|----------------|--------|-----------|
| 2114-1518-1-NG | Almond | 600 LF | Automatic |
| 2114-1518-1-PG | Almond | 300 LF | Pre-Glued |
| 2416-1518-1-NG | Black | 600 LF | Automatic |
| 2454-1518-1-NG | Folkstone Grey | 600 LF | Automatic |
| 2002-1518-1-NG | White | 600 LF | Automatic |
| 2002-1518-1-PG | White | 300 LF | Pre-Glued |

Veneer Tech VENEER TECHNOLOGIES INCORPORATED

REAL WOOD EDGEBOARDING



Stocked in un-glued and/or pre-glued, un-finished and/or pre-finished UV clear coat. 7/8" width.

| Item # | Length Ft. | Description | Type | Specie |
|--------|------------|--------------|-----------|---------|
| 23894 | 500 | Unfinished | Un-glued | Birch |
| 23892 | 250 | Unfinished | Pre-glued | Birch |
| 23880 | 500 | Pre-finished | Un-glued | Birch |
| 23881 | 250 | Pre-finished | Pre-glued | Birch |
| 23879 | 250 | Unfinished | Pre-glued | Maple |
| 23876 | 500 | Pre-finished | Un-glued | Maple |
| 23877 | 250 | Pre-finished | Pre-glued | Maple |
| 23871 | 500 | Unfinished | Un-glued | Red Oak |
| 23893 | 250 | Unfinished | Pre-glued | Red Oak |

Jowat Adhesives

EDGEBOARDING ADHESIVES

Hot Melt



Cartridges & pellets for use on solid wood, veneer, PVC and paper edgebanding. Can also be used for precoating and soft forming applications. Ethylene vinyl acetate (EVA) formula provides good wetting and adhesion. Application temperature 374°F to 410°F.

Cartridges: 48 pcs per box. Sold in full box qty's.

Pellets: 44 lbs per bag. Sold by the bag.

| Item # | Description | Color |
|--------|-------------|---------|
| 45610 | Cartridges | Natural |
| 45603 | Pellets | Natural |

FastCap

FASTEDGE EDGEBOARDING



Peel-N-Stick (PSA) PVC & Real Wood Edgebanding. Sold individually.

| Item # | Size In. x Ft. | Description |
|------------------|----------------|------------------------------|
| FE-SP-1516-50-WH | 15/16 x 50 | White PVC |
| FE-SP-1516-250WH | 15/16 X 250 | White PVC |
| FE-WP-1516-50-HM | 15/16 x 50 | Hardrock Maple PVC |
| FE-SW-1516-50-MP | 15/16 x 50 | Maple Real Wood Un-Finished |
| FE-PW-1516-50-MP | 15/16 x 50 | Maple Real Wood Pre-Finished |

Numerous high pressure laminate, thermofused melamine and real wood species available. Contact United for more details.

Visit us on the web at www.unitedplywoods.com

Birmingham, AL
1640 Mims Ave. SW
Ph: 205-925-7601
Fax: 205-925-1315
800-272-6486

Decatur, AL
723 Old Trinity Road
Ph: 256-355-3161
Fax: 256-355-0073
800-321-6886



Mobile, AL
5445 Business Parkway
Ph: 251-378-0188
Fax: 251-378-0190
877-531-7468

Montgomery, AL
581 Trade Center Street
Ph: 334-265-6721
Fax: 334-265-6725
800-392-8024

EDGEBANDING TRIMMER - SINGLE



Sold individually.

| Item # | Description |
|--------|--------------------------------------|
| ET-6 | Single-Side Edgebanding Edge Trimmer |
| ET-6RP | Replacement Blades for ET-6 |

EDGEBANDING TRIMMER - DOUBLE

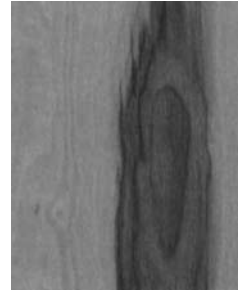


Double edgebanding edge trimmer simultaneously trims both edges of most soft edgebanding materials. Blades will flush or bevel trim panels from 1/2" to 1-1/2" thick material. Sold individually.

| Item # | Description |
|----------|---------------------------------|
| ET-100 | Double Edgebanding Edge Trimmer |
| ET-100RP | Replacement Blades for ET-100 |

Veneer Tech
VENEER TECHNOLOGIES INCORPORATED

WOOD VENEER SHEETS



4' x 8' Sheets. Stocked in: traditional 10mil paper back and tech 2 back (phenolic backing). Sold individually.

| Item # | Specie | Description | Type |
|------------|-------------|------------------|-------------------|
| ZM00013445 | Alder | Flat cut A grade | 10mil. Veneer |
| 23950 | White Birch | Rotary spliced | 10mil. Paper back |
| 23951 | Maple | Flat cut A grade | 10mil. Paper back |
| 23952 | Red oak | Flat cut A grade | 10mil. Paper back |
| 23953 | White Birch | Rotary spliced | Tech 2 back |
| 23954 | Maple | Flat cut A grade | Tech 2 back |
| 23955 | Red oak | Flat cut A grade | Tech 2 back |

Available in 88 exotic and standard wood species with various back options.

Contact your local branch for more details.

Visit us on the web at www.unitedplywoods.com

Birmingham, AL
 1640 Mims Ave. SW
 Ph: 205-925-7601
 Fax: 205-925-1315
 800-272-6486

Decatur, AL
 723 Old Trinity Road
 Ph: 256-355-3161
 Fax: 256-355-0073
 800-321-6886



Mobile, AL
 5445 Business Parkway
 Ph: 251-378-0188
 Fax: 251-378-0190
 877-531-7468

Montgomery, AL
 581 Trade Center Street
 Ph: 334-265-6721
 Fax: 334-265-6725
 800-392-8024



TREEFROG VENEERS



Postformable, furniture-grade wood veneer composite surface with phenolic backer. Polyurethane lacquer finish. 1/32" thick. 4' x 8' sheets. 7/8" bending radius.

Note: Wax effect is comparable to a flat or matte finish.

| Item # | Name | Finish |
|--------|--------------------------|------------|
| 60101 | Maple fris  | Gloss |
| 60102 | Maple birds eye | Gloss |
| 60104 | Maple straight grain | Wax effect |
| 60204 | White oak straight grain | Wax effect |
| 60210 | Oak decap  crown | Wax effect |
| 60303 | Mahogany burl | Gloss |
| 60304 | Mahogany straight grain | Gloss |
| 60403 | Walnut burl | Gloss |
| 60404 | Walnut straight grain | Gloss |
| 60405 | American walnut crown | Wax effect |
| 60507 | Anigr  figured | Wax effect |
| 60601 | Old cherry fris  | Gloss |
| 60602 | Cherry birds eye | Gloss |
| 60604 | Cherry straight grain | Wax effect |
| 60609 | Cherry beeswing | Gloss |
| 60704 | Weng  straight grain | Wax effect |
| 60705 | Weng  crown | Wax effect |
| 60804 | Teak straight grain | Gloss |
| 60812 | Teak sabbiaata | Wax effect |
| 60904 | Zebrawood straight grain | Wax effect |
| 61003 | Coffee bubinga burl | Gloss |
| 61104 | Ebony straight grain | Wax effect |
| 61112 | Ebony sabbiaata | Wax effect |
| 61403 | Fruitwood burl | Gloss |
| 62005 | Macassar B&W crown | Wax effect |
| 62204 | Gray oak straight grain | Wax effect |
| 62304 | Black oak straight grain | Wax effect |
| 62605 | Green willow crown | Wax effect |

| Item # | Name | Finish |
|--------|---------------------------|------------|
| 62807 | Silver ash figured | Wax effect |
| 62904 | Palmwood straight grain | Wax effect |
| 63004 | Asian cherry | Wax effect |
| 63103 | Sangria bubinga burl | Gloss |
| 63204 | Red mahogany straight | Gloss |
| 63304 | Weng  gloss | Gloss |
| 63404 | Salsawood straight grain | Wax effect |
| 63504 | White macassar | Wax effect |
| 63604 | Lapiswood straight grain | Wax effect |
| 63804 | Sienna birch figured | Wax effect |
| 69500 | Weng  intricate | Matte |
| 69501 | European cherry intricate | Matte |
| 69502 | Black oak herringbone | Matte |
| 69503 | Zebrawood herringbone | Matte |
| 69504 | Weng  herringbone | Matte |
| 69506 | Black walnut square | Matte |
| 69507 | Weng  square | Matte |
| 69508 | White oak diamond | Matte |
| 69509 | Makor  diamond | Matte |
| 69510 | Canyonlands | Matte |
| 69511 | Escalant  | Matte |

EDGEBANDING & VENEERS

**OUR PLEDGE IS
DEDICATION TO
OUTSTANDING CUSTOMER
SERVICE**

Visit us on the web at www.unitedplywoods.com

Birmingham, AL
1640 Mims Ave. SW
Ph: 205-925-7601
Fax: 205-925-1315
800-272-6486

Decatur, AL
723 Old Trinity Road
Ph: 256-355-3161
Fax: 256-355-0073
800-321-6886



Mobile, AL
5445 Business Parkway
Ph: 251-378-0188
Fax: 251-378-0190
877-531-7468

Montgomery, AL
581 Trade Center Street
Ph: 334-265-6721
Fax: 334-265-6725
800-392-8024

