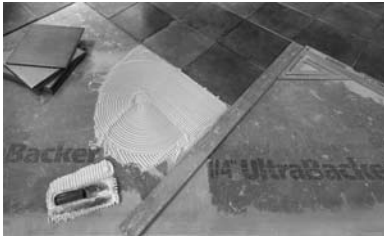




ULTRA BACKER



Ideal underlayment for interior applications such as shower/tub enclosures, countertops and floors. Withstands prolonged exposure to moisture. 50 Pieces per unit. Sold by the unit.

Item #	Width In.	Length In.	Thickness In.
CB2314UB	36	60	1/4

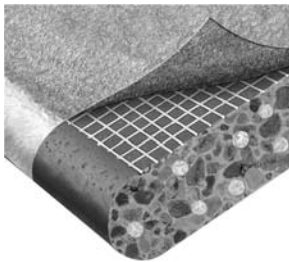
PERMABASE



A rigid substrate made of portland cement, aggregate and glass mesh that provides an exceptionally hard, durable surface that is able to withstand prolonged exposure to moisture. Ideally suited as an underlayment or backing surface for tub and shower surrounds, countertops, flooring, and a variety of other interior and exterior applications. 50 Pieces per unit. Sold by the unit.

Item #	Dimensions (Th x W x L) In.
CB0414PB	1/4 x 48 x 48

PERMABASE CEMENT BOARD



Tapered, double-wrapped edge design allows for closer nail or screw application to the edge. Resists growth of mold and mildew. Highly moisture resistant and will not rot, disintegrate or swell when exposed to water. Impact resistant, dimensionally stable, has excellent overall flexural, compressive and tensile strength characteristics. Can be cut to size using a standard utility knife. 50 Pieces per unit. Sold by the unit.

Item #	Dimensions (Th x W x L) In.
CB3612PB	1/2 x 36 x 60

McMINNVILLE MANUFACTURING CO.

PREFINISHED FLOORINGS

Velvet Brand



3/4 x 3-1/4" Size. 22.5 sq. ft. per box.

Grades. Select and better; No. 1 common and better; No. 2 common; and No. 2 common beveled 2 side.

Colors. Natural red oak; Natural white oak; Butterscotch; and Gunstock.

Contact your representative for complete information and availability.

UNFINISHED FLOORINGS

Velvet Brand



Available in 2-1/4", 3-1/4", 4" or 5" sizes.

Grades. Select and better; No. 1 common and better; and No. 2 common.

Species. Red oak and white oak.

Contact your representative for complete information and availability.

PREFINISHED FLOORINGS



Red oak. No. 1 common grade. Solid wood. 3/4" Thick.

Item #	Width In.	Finish	SqFt/Box
19700	2-1/4	Gunstock	20-1/2
19701	2-1/4	Natural	20-1/2
19703	3-1/4	Gunstock	22-1/2
19704	3-1/4	Natural	22-1/2

Visit us on the web at www.unitedplywoods.com

Birmingham, AL
1640 Mims Ave. SW
Ph: 205-925-7601
Fax: 205-925-1315
800-272-6486

Decatur, AL
723 Old Trinity Road
Ph: 256-355-3161
Fax: 256-355-0073
800-321-6886



Mobile, AL
5445 Business Parkway
Ph: 251-378-0188
Fax: 251-378-0190
877-531-7468

Montgomery, AL
581 Trade Center Street
Ph: 334-265-6721
Fax: 334-265-6725
800-392-8024

McMINNVILLE MANUFACTURING CO.


UNFINISHED FLOORINGS




No. 1 common grade. Solid wood. 3/4" Thick.

Item #	Width In.	Species	SqFt/Box
19805	2-1/4	Red oak	19-1/2
19804	3-1/4	Red oak	21-1/8
19806	3-1/4	White oak	21-1/8

FEATURED PRODUCTS

 Wilsonart® Laminate

***Decorative Laminates -
Your Ideas. Realized.***

look deeper
 Wilsonart®
Solid Surface

***Solid Surface Products -
Surface Solutions with Solid
Possibilities.***

Visit us on the web at www.unitedplywoods.com

Birmingham, AL
1640 Mims Ave. SW
Ph: 205-925-7601
Fax: 205-925-1315
800-272-6486

Decatur, AL
723 Old Trinity Road
Ph: 256-355-3161
Fax: 256-355-0073
800-321-6886



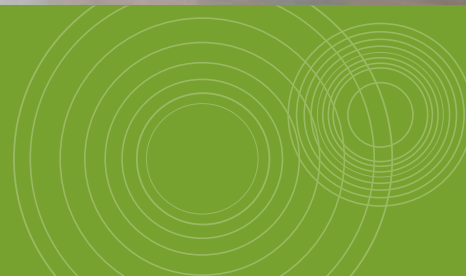
Mobile, AL
5445 Business Parkway
Ph: 251-378-0188
Fax: 251-378-0190
877-531-7468

Montgomery, AL
581 Trade Center Street
Ph: 334-265-6721
Fax: 334-265-6725
800-392-8024

 Wilsonart® Contract
LAMINATE



Your ideas. Realized.



2011 Home Wallboard Chip Locator (Alphabetical)

	Name	Number	Row	Chip
A	African Slate*	1856K-55♦	1	1
	Aged Piazza*	1868K-55♦	3	3
	Alpine Passage	1844K-45♦	2	11
	Amber Fusion	1794K-07‡	7	3
	Antique Glass	4903-38	10	2
	Antique Roca	4838-38	10	12
	Antique Topaz	4863K-07‡	7	9
B	Bahia Granite	4595K-52‡	6	11
	Bainbrook Grey*	1822K-35♦	1	5
	Bella Capri	1822K-35♦	1	9
	Bella Noche	1820K-35♦	1	7
	Bella Reale	1821K-35♦	1	6
	Bella Venito	1819K-35♦	1	8
	Bengal Slate*	1857K-55♦	1	2
	Black Alicante*	4926K-07‡	8	1
	Blackstar Granite	4551K-01‡	6	4
	Bordeaux Juparana*	4929-38	9	16
	Bottle Glass	4901K-01‡	8	11
	Brazilian Topaz	4584K-07‡	7	10
	Bronze Eclipse	1847K-45♦	2	12
	Bronzed Fusion	1796K-07‡	7	4
	Brune Slate	1763-60	9	7
C	Calcutta Marble*	4925K-07‡	8	2
	Canyon Black	1755K-01‡	6	6
	Canyon Passage	1842K-45♦	2	8
	Carrara Santorini*	1855K-55♦	3	1
	Corinthian Limestone*	1862K-55♦	4	2
	Crema Marfil*	4927-38	10	8
	Crystalline Braun	1839K-45♦	3	12
	Crystalline Dune	1838K-45♦	3	11
	Crystalline Ice	1836K-45♦	3	14
	Crystalline Iris	1840K-45♦	2	14
	Crystalline Onyx	1835K-45♦	3	13
	Crystalline Pearl	1837K-45♦	3	16
	Crystalline Shell	1834K-45♦	3	15
D	Deep Springs	4907-38	10	15
	Deepstar Agate	1815K-35♦	2	6
	Deepstar Bronze	1814K-35♦	2	7
	Deepstar Flint	1811K-35♦	2	5
	Deepstar Fossil	1812K-35♦	3	9
	Deepstar Glaze	1813K-35♦	3	10
	Deepstar Mineral	1817K-35♦	3	8
	Deepstar Slate	1818K-35♦	2	4
	Desert Passage	1841K-45♦	2	10
	Desert Springs	4904-38	10	13
E	Ebony Eclipse	1848K-45♦	2	13
	Ebony Fusion	1799K-07‡	7	5
	Ebony Star	4552K-07‡	6	5
F	Flame Soapstone	4884-38	9	4
	Fresco	4207-60	9	8
	Frosted Glass	4899K-01‡	8	9
G	Girona Beach	4896K-01‡	8	14
	Girona Cavern	4897K-01‡	8	15
	Girona Cliff	4898K-01‡	8	13
	Girona Envy	4895K-01‡	8	16
	Girona Falls	4894K-01‡	8	12
	Golden Juparana*	4932-38	9	14
	Golden Travertine*	1859K-55♦	1	4
	Granite	4550K-01‡	6	3
	Green Soapstone	4885-38	9	5
J	Jeweled Coral	4866K-52‡	6	8
	Jeweled Ivory	4868K-52‡	6	7
	Jeweled Opal	4865K-52‡	6	9
K	Kalahari Topaz	4588K-07‡	7	7
L	Luna Crest	1852K-35♦	1	15
	Luna Frost	1849K-35♦	1	16

	Name	Number	Row	Chip
	Luna Glow	1851K-35♦	2	15
	Luna Night	1854K-35♦	1	13
	Luna Shadow	1853K-35♦	1	14
	Luna Winter	1850K-35♦	2	16
M	Madura Citrine*	4920K-52‡	8	5
	Madura Garnet*	4921K-52‡	8	3
	Madura Gold*	4923K-52‡	8	4
	Madura Pearl*	4922K-52‡	8	6
	Mecury Glass	4902-38	10	3
	Mesa Gold	4580K-07‡	5	4
	Mesa Sand	4579K-07‡	5	3
	Mesa Sunrise	4571K-07‡	5	5
	Milano Amber	4724K-52‡	5	8
	Milano Baltic	4889K-52‡	6	10
	Milano Blaze	4890K-52‡	5	10
	Milano Brown	4725K-52‡	5	6
	Milano Mahogany	4728K-52‡	5	9
	Milano Quartz	4726K-52‡	5	7
	Milano Rosso	4891K-52‡	5	11
	Mountain Passage	1843K-45♦	2	9
	Mystic Gemstone	1830K-35♦	1	10
	Mystique Dawn	4762-60	10	5
	Mystique Marine	4759-60	9	12
	Mystique Moonlight	4757-60	10	4
	Mystique Mount	4761-60	10	6
	Mystique Night	4760-60	9	11
O	Oiled Soapstone	4882-38	9	1
P	Pearl Soapstone	4886-38	9	6
	Perla Piazza*	1867K-55♦	3	2
	Polished Mosaic	4892K-01‡	7	11
R	Raven Gemstone	1831K-35♦	1	12
	River Gemstone	1832K-35♦	1	11
	Roman Limestone*	1860K-55♦	4	1
	Rustic Slate	4888-38	10	1
S	Sable Soapstone	4883-38	9	2
	Salentina Grigio*	1865K-55♦	2	1
	Salentina Nero*	1864K-55♦	2	3
	Salentina Rosso*	1866K-55♦	2	2
	Sandy Topaz	4862K-07‡	7	8
	Sea Glass	4900K-01‡	8	10
	Sedona Bluff	1824K-35♦	3	6
	Sedona Spa	1825K-35♦	3	5
	Sedona Spirit	1823K-35♦	3	4
	Sedona Trail	1826K-35♦	3	7
	Silver Travertine*	1858K-55♦	1	3
	Smoky Topaz	4589K-07‡	7	6
	Spicewood Springs	4905-38	10	16
	Sunstone	4781K-52‡	8	8
T	Tan Soapstone	4887-38	9	3
	Terra Roca	4837-38	10	11
	Tumbled Mosaic	4893-60	10	7
	Tumbled Roca	4835-38	10	9
	Tuscan Limestone*	1861K-55♦	4	3
V	Venetian Ale*	4930-38	9	13
	Venetian Ivory*	4928-38	9	10
	Villa Roca	4836-38	10	10
W	White Carrara*	4924-38	9	9
	White Juparana*	4931-38	9	15
	Willow Springs	4906-38	10	14

* NEW for 2011 ♦ HD Premium ‡ Premium Laminate



2011 Contract Wallboard Chip Locator (Alphabetical)

Name	Number	Row	Chip
Alabaster	D431-60	1	6
Almond Leather	2932-60	4	2
Aloe	7962K-18‡	6	3
Alpine Passage	1844K-45♦	14	6
Amazon	D478-60	3	10
Amber Cherry	7919K-78‡	12	11
Antique Brush	4823-60	9	8
Antique Glass	4903-38	5	4
Antique Topaz	4863K-07‡	9	14
Antique White	1572-60	1	5
Asian Night	7949K-18‡	6	1
Asian Sand	7952K-18‡	6	2
Asian Sun	7951K-18‡	6	5
Atlantis	D25-60	3	15
Bannister Oak	7806-60	11	5
Beige	1530-60	2	2
Beige Nebula	4624-60	3	3
Beige Pampas	4170-60	4	4
Beigewood	7850-60	10	2
Bella Capri	1822K-35♦	13	10
Bella Noche	1820K-35♦	13	11
Bella Reale	1821K-35♦	13	12
Bella Venito	1819K-35♦	13	9
Biltmore Cherry	7924K-07‡	11	15
Black	1595-60	2	16
Black*	1595K-18‡	16	8
Black*	1595K-01‡	16	9
Blond Echo	7939K-18‡	11	2
Blue Agave*	4919-60	16	16
Bottle Glass	4901K-01‡	5	5
Brazilian Topaz	4584K-07‡	9	13
Brazilwood	7946-38	12	7
Brighton Walnut	7922K-07‡	12	9
Brittany Blue	D321-60	3	14
Bronze Eclipse	1847K-45♦	15	9
Bronze Legacy	4656-60	4	11
Burnished Chestnut	4796-60	8	8
Burnished Ember	4798-60	8	7
Cafe Creme	D456-60	1	11
Caldera Beige	4608-60	4	1
Canyon Passage	1842K-45♦	14	8
Canyon Zephyr	4842-60	4	10
Carbon EV	4820-60	7	1
Carbon Mesh	4880-38	8	1
Castle Oak	7928-38	12	5
Chai Tea	4910-60	6	8
Chardonnay	7955-38	10	3
Cloud	D391-60	2	8
Cloud Nebula	4630-60	3	5
Cloud Zephyr	4856-60	4	6
Cocobala	7942K-07‡	11	11
Colombian Walnut	7943K-07‡	10	10
Copper Mesh	4881-38	8	6
Crisp Zephyr	4858-60	7	11
Crystalline Braun	1839K-45♦	14	13
Crystalline Dune	1838K-45♦	14	14
Crystalline Ice	1836K-45♦	14	10
Crystalline Iris	1840K-45♦	14	12
Crystalline Onyx	1835K-45♦	14	11
Crystalline Pearl	1837K-45♦	14	15
Crystalline Shell	1834K-45♦	14	16
Curry Tigris	4672-60	7	6
Deepstar Agate	1815K-35♦	14	3
Deepstar Bronze	1814K-35♦	14	4
Deepstar Fint	1811K-35♦	14	2
Deepstar Fossil	1812K-35♦	15	15
Deepstar Glaze	1813K-35♦	15	16
Deepstar Jade	1816K-35♦	15	14
Deepstar Mineral	1817K-35♦	15	13
Deepstar Slate	1818K-35♦	14	1
Desert Passage	1841K-45♦	14	9
Desert Zephyr	4841-60	7	10
Designer White	D354-60	1	7
Designer White*	D354K-18‡	16	7
Dove Grey	D92-60	2	10
Ebony Eclipse	1848K-45♦	15	8
Eggplant*	4913-60	16	10
Empire Mahogany	7122K-07‡	11	12
English Oak	7885K-78‡	10	13
Evening Tigris	4674-60	3	12
Fashion Grey	D381-60	2	7
Featherstone	D72-60	2	5
Figured Mahogany	7040K-78‡	11	13
Flame Soapstone	4884-38	6	15
Fonhill Pear	10745-60	12	14
Frosted Glass	4899K-01‡	5	1
Frosty White	1573-60	1	9
Fusion Maple	7909-60	12	3

Name	Number	Row	Chip
Galactic Black	4799K-07‡	9	12
Gilded Mesh	4912-38	8	4
Ginseng Tea	4909-60	6	7
Gold Alchemy	4861K-07‡	9	5
Golden Oak	7888-60	11	4
Graphite Nebula	4623-60	4	16
Green Legacy	4657-60	4	12
Green Soapstone	4885-38	6	12
Green Tigris	4667-60	7	12
Grey	1500-60	2	6
Grey Glace	4142-60	3	6
Grey Mesh	4877-38	9	2
Grey Nebula	4622-60	3	4
Grey Pampas	4168-60	4	5
Greystone	4790K-52‡	7	14
Hampton Walnut	7959K-78‡	11	9
Harvest Maple	7953-38	10	5
Haze	D97-60	2	3
Hollyberry	D307-60	2	14
Honduran Mahogany	7956K-78‡	10	14
Hunter Green	D79-60	2	15
Huntington Maple	7929-38	12	13
Indigo	D379-60	3	16
Kalahari Topaz	4588K-07‡	9	16
Karratha Brush	4744-60	1	14
Kensington Maple	10776-60	12	1
Kenya Mahogany	7958K-78‡	11	10
Khaki Brown	D50-60	2	1
Kiwi*	4917-60	16	14
Lapis Blue	D417-60	1	16
Light Beige	1531-60	1	3
Limber Maple	10734-60	12	2
Limestone	4789K-52‡	7	16
Loden Zephyr	4844-60	3	9
Lodestone	4680-60	5	6
Luna Crest	1852K-35♦	15	5
Luna Frost	1849K-35♦	15	2
Luna Glow	1851K-35♦	15	4
Luna Night	1854K-35♦	15	1
Luna Shadow	1853K-35♦	15	3
Luna Winter	1850K-35♦	15	6
Madagascar	7944K-01‡	10	11
Mambo	7948K-07‡	12	10
Manitoba Maple	7911-60	11	1
Maroochy Brush	4745-60	1	13
Medallion	1846K-35♦	15	7
Mercury Glass	4902-38	5	3
Metallic Bronze	1827K-35♦	15	10
Metallic Silver	1829K-35♦	15	11
Metallic Steel	1828K-35♦	15	12
Mission Adobe	4849-38	5	14
Mission Glaze	4854-38	5	15
Mission Sage	4848-38	5	12
Mission Sand	4851-38	5	9
Mission Shadow	4852-38	5	11
Mission Smoke	4847-38	5	13
Mission Stone	4853-38	5	10
Mission Stucco	4850-38	5	8
Misted Zephyr	4843-60	4	14
Montana Walnut	7110K-78‡	10	9
Monticello Maple	7925-38	12	15
Morro Zephyr	4846-60	8	9
Mountain Passage	1843K-45♦	14	5
Mystic Gemstone	1830K-35♦	13	7
Natural Almond	D30-60	1	2
Natural Nebula	4633-60	3	2
Natural Pear	7061-60	12	16
Natural Rift	7954-38	10	4
Natural Tigris	4669-60	7	7
Navy Legacy	4651-60	4	15
Nepal Teak	7209K-78‡	10	8
Neutral Glace	4143-60	3	1
New Age Oak	7938-38	12	4
Nickel EV	4813-60	7	2
Night Passage	1845K-45♦	14	7
North Sea	D90-60	2	11
Ochre Roletta	4738-60	7	8
Oiled Soapstone	4882-38	6	13
Olive Legacy	4654-60	4	13
Oxide	1787-60	6	16
Pampas	4166-60	4	3
Pearl Soapstone	4886-38	6	11
Pepperdust	D327-60	2	4
Persian Blue*	D26K-18‡	16	5
Pewter Brush	4779-60	9	7
Pewter Mesh	4878-38	8	3
Platinum	D315-60	2	9
Polished Mosaic	4892K-01‡	10	16

Name	Number	Row	Chip
Pomegranate*	4914-60	16	11
Port	D14-60	2	13
Putty	1503-60	1	1
Radium EV	4812-60	7	3
Raven Gemstone	1831K-35♦	13	6
Regimental Red*	D12K-18‡	16	6
Rio	7947K-18‡	11	8
River Cherry	7937-38	10	6
River Gemstone	1832K-35♦	13	8
Rustic Sate	4888-38	5	16
Sable Soapstone	4883-38	6	14
Saffron Tigris	4673-60	7	5
Sand	D331-60	1	12
Sandy Topaz	4862K-07‡	9	15
Sanibel Maple	7908-60	10	1
Satin Stainless	4830K-18‡	9	1
Sea Glass	4900K-01‡	5	2
Sedona Bluff	1824K-35♦	13	16
Sedona Spa	1825K-35♦	13	15
Sedona Spirit	1823K-35♦	13	14
Sedona Trail	1826K-35♦	13	13
Shadow	D96-60	3	11
Shadow Zephyr	4857-60	4	7
Shaker Cherry	7935K-07‡	12	8
Sheer Mesh	4876-38	9	3
Silicon EV	4811-60	4	9
Silver Alchemy	4860K-07‡	9	6
Slate Grey	D91-60	2	12
Smoky Topaz	4589K-07‡	9	11
Soft Gold Mesh	4911-38	8	5
Solar Oak	7816-60	11	6
Spiced Zephyr	4859-60	7	9
Sprout*	4918-60	16	1
Steel Mesh	4879-38	8	2
Studio Teak	7960K-18‡	10	7
Sunstone	4781K-52‡	7	15
Sweet Corn*	4916-60	16	13
Tan Echo	7941K-18‡	11	3
Tan Soapstone	4887-38	6	10
Tangerine*	4915-60	16	12
Tawny Legacy	4663-60	6	9
Titanium EV	4810-60	4	8
Tumbled Mosaic	4893-60	5	7
Tungsten EV	4814-60	7	4
Tuscan Walnut	7921-38	12	6
Twilight Zephyr	4845-60	3	13
Versailles Anigre	7923K-07‡	11	16
Wallaby	D439-60	1	4
Western Bronze	4873-60	8	12
Western Hills	4874-60	8	11
Western Iron	4875-60	8	10
Western Storm	4872-60	8	13
Western Suede	4871-60	8	14
Western Tan	4870-60	8	15
Western White	4869-60	8	16
White	1570-60	1	8
White Nebula	4621-60	3	7
White Sand	D403-60	1	10
White Tea	4908-60	6	6
White Tigris	4783-60	3	8
Wild Cherry	7054-60	12	2
Williamsburg Cherry	7936K-07‡	10	15
Willowstone	4791K-52‡	7	13
Windsor Mahogany	7039K-78‡	11	14
Windswept	4793-60	9	4
Windswept Bronze	4794-60	9	9
Windswept Pewter	4795-60	9	10
Woolamai Brush	4746-60	1	15
Xanadu	7945K-18‡	10	12
Yarrow	7961K-18‡	6	4
Zanzibar	7957K-78‡	11	7

*New for 2010 ♦ HD Premium ‡ Premium Laminate

PRODUCT REFERENCE

BASIC TYPES

	GENERAL PURPOSE Type 107	POSTFORMING Type 350	VERTICAL Type 335
<i>Availability</i>	Most colors and designs (check availability on wilsonartcontract.com)		
<i>Attributes</i>	Thickest and most impact resistant	Ideal for seamless bends/curves	Costs less and can be postformed
<i>Intended Uses</i>	Work surfaces, counters, desks, tables, doors	Counters, des ktops, cabinet and drawer panels	Cabinet doors, walls, and drawer panels

WILSONART® HD® HIGH DEFINITION® LAMINATE Type 376

<i>Availability</i>	51 designs
<i>Attributes</i>	Optical dimensionality plus increased wear resistance. Postformable. FSC Certified.
<i>Intended Uses</i>	Residential applications and many commercial applications including countertops, work surfaces, checkout counters, and tabletops

PERFORMANCE GRADE LAMINATES

CHEMSURF® CHEMICAL-RESISTANT

	Type 390
<i>Availability</i>	Most colors and designs (check availability on wilsonartcontract.com)
<i>Attributes</i>	Postformable
<i>Intended Uses</i>	Laboratory casework and counters, hospital tabletops, photographic darkrooms, nurses' stations, physician and dentist examination rooms

FIRE-RATED

	Type 604	Type 605	Type 607
<i>Availability</i>	Most colors and designs (check availability on wilsonartcontract.com)—Fire-Rated backers also available, Types 264 and 265		
<i>Attributes</i>	Class I, A fire rating—Not postformable		
<i>Intended Uses</i>	Casework and cabinets, interior doors, wainscoting, wall panels and dividers in areas such as airports, hospitals, office buildings, and schools		

HIGH WEAR

	Type 107HW	Type 350HW	Type 335HW
<i>Availability</i>	Most colors and designs—solids and dark woodgrains may vary slightly, request lab samples		
<i>Attributes</i>	Enhanced abrasion/scuff resistance. Meets NEMA requirements for High-Wear Laminate. 335 and 350 are postformable.		
<i>Intended Uses</i>	Checkout counters; restaurant, fast food, and bank fixtures; institutional furniture, countertops, wainscoting, and wall panels		

MARKER BOARD

	Type 136	Type 336
<i>Availability</i>	1573 Frosty White, 4 x 8 and 4 x 12	
<i>Attributes</i>	Thickest and most impact resistant	Thinner, costs less
<i>Intended Uses</i>	Presentation areas, schools, conference rooms, planning centers and offices, children's furniture, nursery school and day care applications	

CHALKBOARD

	Type 137
<i>Availability</i>	4623-60—Graphite Nebula, 4627-60—Hunter Nebula, 4 x 8 only
<i>Attributes</i>	Use with conventional chalkboard chalk.
<i>Intended Uses</i>	Presentation areas, schools, conference rooms, planning centers and offices, children's furniture, nursery school and day care applications

Sizes and finishes may vary. Call your Wilsonart Distributor for availability.



WILSONART® is a trademark of Wilsonart International, Inc. registered in the United States and other countries. HIGH DEFINITION, HD, the HD logo, the Gold Oval Design, and the AEON logo are also trademarks of Wilsonart International, Inc.

Wilsonart® Laminate is GREENGUARD® Indoor Air Quality and GREENGUARD® Children & Schools Certified.



Solid Surface



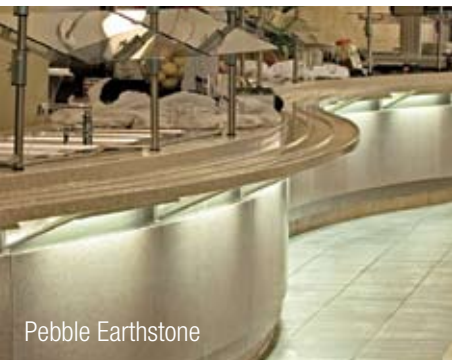
Surface solutions with solid possibilities.

The benefits of adaptable, dependable design.

Imagine the possibilities: a surfacing material that gives you design versatility, renewability and repairability, and the ability to virtually eliminate seam issues. Available in over 50 colors and designs, Wilsonart's 100% acrylic solid surfaces are ideal for a wide range of environments, where you need a surface that looks good, performs well, and provides options that no other surfacing material can.

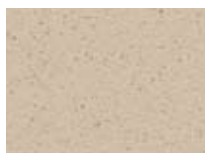
Wilsonart Solid Surface is FDA and NSF approved for food preparation areas. Due to its inconspicuous waterproof seams, it's easier to clean and keep free of mold and mildew. Plus, Wilsonart Solid Surface has also received GREENGUARD® Indoor Air Quality and GREENGUARD® Children & Schools Certifications, ensuring that it won't contribute to harmful indoor air quality, and eight Wilsonart Solid Surface designs have been certified by Scientific Certification Systems (SCS) for recycled content. See sustain.wilsonart.com for certifications.

Resistant to stains and easy to maintain, Wilsonart Solid Surface also requires no surface sealants or costly day-to-day maintenance. And because it is renewable and repairable, slight scratches can be buffed away by the customer or professionally addressed by a Certified Wilsonart® Fabricator.

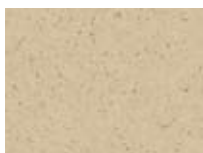


Pebble Earthstone

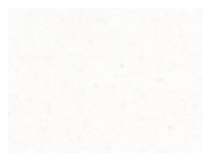
Wilsonart Solid Surface



9062GG (3) White Pepper



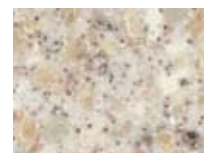
9066GG (3) Sesame



9100GS (3) Coconut Oil



9103GS (3) Milk & Honey



9140EA (5) Nevada



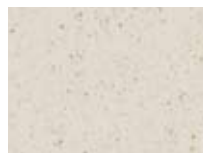
9038EA (5) Flagstone
SCS-MC-02018*



9067GG (3) Cumin



9064GG (3) Nutmeg



9101GS (3) Oatmeal



9034EA (5) Terrazo



9036EA (5) Pebble
SCS-MC-02018*



9074EA (5) Bluestone
SCS-MC-02018*



9063GG (3) Capers



9065GG (3) Cocoa Chile



9102GS (3) Herbal Mint



9042EA (5) Bedrock
SCS-MC-02019*

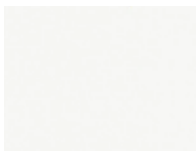


9174EA (5) Durango

Designs shown are printed reproductions. For final selection, please see actual samples.



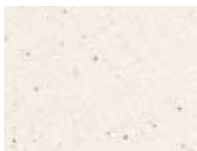
*Recycled Content – Pre-Consumer
SCS-MC-02019 – Minimum 8%
SCS-MC-02018 – Minimum 11%



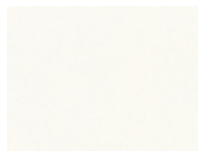
D354SL (1) Designer White



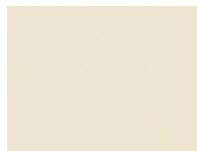
9077ST (3) Milk Glass Spectra



1573MG (2) Frosty White Mirage



1573SL (1) Frosty White*



1572SL (1) Antique White*



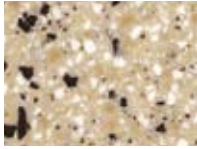
9032ML (3) Arabian Melange



9135MG (2) Cashmere Mirage



9070ML (3) Arctic Melange



9030ML (3) Baja Melange



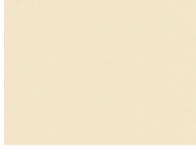
9043RS (4) Bluff Riverstone



9137RS (4) Blanco Riverstone



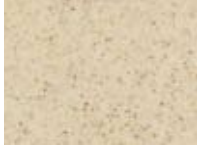
9138RS (4) San Gabriel Riverstone



D30SL (1) Natural Almond



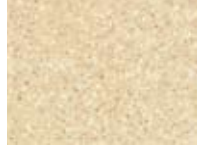
1530TM (2) Beige Tempest*



9130MG (2) Marzipan Mirage



9031ML (3) Mojave Melange



9136RS (4) Dry Creek Riverstone



9033ML (3) Caramel Melange



9145CY (5) Crystal Champagne



1531MG (2) Light Beige Mirage



D50TM (2) Khaki Brown Tempest



9047ML (3) Chicory Cream Melange



9041ML (3) Quarry Melange



9040MG (2) Burnt Amber Mirage



9073ML (3) Calypso Melange



9089MG (2) Sea Mist Mirage



9054CY (5) Crystal Mint



9085MG (2) Juniper Mirage



9053SN (5) Sonata Spruce



9191SN (5) Sonata Espresso



D426MG (2) Raven Mirage



9091ML (3) Midnight Melange



9092MG (2) Black Onyx Mirage



9098ST (3) Stardust Spectra



9148RS (4) Sienna Riverstone



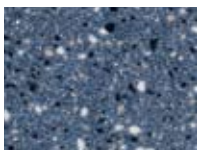
9144SN (5) Sonata Chocolate



9194TM (2) Steel Grey Tempest



9195ML (3) Northern Melange



9027ML (3) Indigo Melange



9028MG (2) Royal Mirage



9024ML (3) French Blue Melange



9026CY (5) Crystal Blue

*Designs available in 1/4" thickness (Type 025) from stock.

PRODUCT REFERENCE

All Wilsonart Solid Surface products are manufactured with acrylic resins, fire-retardant fillers, and proprietary coloring agents that create uniform color throughout the surface thickness. Tech data available at wilsonartcontract.com.

Wilsonart Solid Surface:

Product Type 051

Sheet Dimensions

Panel Size: 30" x 144" (76.2cm x 365.8cm)

Thickness: Product Type 051 = 0.490" (1.24cm) ± 0.025" (0.06cm)

Finish: Final finish is supplied by the fabricator and may range from matte to high gloss, depending on the customer's specification. Surfaces with gloss and semi-gloss finishes require more maintenance than matte or satin finishes. Darker colors also may require more attention.

Applications: Interior horizontal work surfaces

Key Benefits: Versatility and consistency

Product Type 025

Sheet Dimensions

Panel Size: 30" x 120" (76.2cm x 304.8cm)

Thickness: Product Type 025 = 0.240" (0.6096 cm) ± 0.015" (0.0381cm)

Finish: The final finish is supplied by the fabricator and may range from matte to high gloss, depending on needs.

Applications: Interior vertical surfaces, i.e., wall/elevator paneling, tub/shower surrounds, backsplashes, counter facades, and interior signage.

Key Benefits: Easy to apply, thus reducing installation costs



Wilsonart Solid Surface is GREENGUARD® Indoor Air Quality and GREENGUARD® Children & Schools Certified.



About Wilsonart® Contract

Serving the design and specifications community, Wilsonart® Contract is the resource for our exclusive line of high performance commercial products, including Wilsonart® Contract Laminate, Wilsonart® Contract Flooring, and the Wilsonart® Contract Portfolio, comprising Wilsonart® Decorative Metals, Wilsonart® Solid Surface, Wilsonart® Solid Phenolic Core (SPC) panels, and Wilsonart® TFM. Wilsonart International, based in Temple, Texas, is a leading manufacturer of decorative surfacing products. For more information on Wilsonart Contract, please call our Customer Service Smartline at 1-800-433-3222 or visit wilsonartcontract.com.

 **Wilsonart® Contract**
Where it all comes together.™

